



**TURFCARE**  
and HIRE Pty Ltd

## PROFESSIONAL TURF MANAGEMENT

*“Where quality  
workmanship and  
attention to detail  
does matter”*

### *In this issue:*

**It's Renovation Season**

**Upcoming Events:**

*Metrac Broadacre*

*Mower Demonstration*

**Spraying**

**Why Dethatch?**

**Importance of Aeration**

**Staff Profile**



*Management and staff from Turfcare  
and Hire would like to wish you a Merry  
Christmas and a happy and safe New Year.*

**Check out our  
new website!**

**SUMMER 2012  
NEWSLETTER**

[www.turfcare.com.au](http://www.turfcare.com.au)

E: [info@turfcare.com.au](mailto:info@turfcare.com.au)

P: 03 5248 0000

## It's Renovation Season

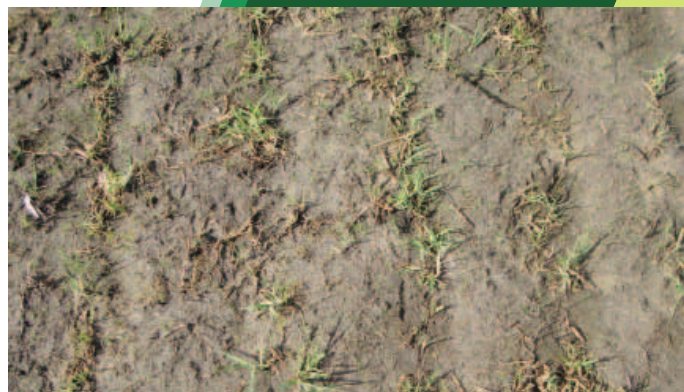
The City of Greater Geelong commissioned Turfcare and Hire Pty Ltd to convert Myers oval in Bell Post Hill to a drought tolerant turf Kikuyu to improve their drought tolerance.

The installation of warm season grass on these ovals will decrease water requirements significantly with the added bonus of maintaining a healthy grass coverage across the oval.

Kikuyu is commonly used for sports fields with a mid green colour and is a popular variety due to its tough and durable nature in mid-wear areas. It requires little water and best kept to a 20mm height, cut back short in spring to thin out. This grass goes into dormancy for 8-10 weeks during winter. Kikuyu has a modest shade tolerance, although it prefers full sun and will thrive and tolerate wear, with the ability to repair itself.

The oval has been re-constructed using the in-line planting method. The works involved spraying out the original grasses, prior to power harrowing and rotary hoeing the surface to break up the surface followed by laser levelling. Kikuyu sod was then line planted into the soil profile and oval was rolled and fertilised. A carefully monitored irrigation and maintenance program is now in place.

It is expected the oval will be ready for use by the end of January 2012.



Two weeks after planting



Rootzone two weeks after planting



Seven weeks after planting

## Metrac Broadacre Mower Demonstration *(EVENT HAPPENING SOON!)*

Our new broadacre mower has arrived. This mower will allow us to specialise in slope mowing, roadside slashing services and broadacre mowing. We will contact you shortly regarding our demonstration day where you can see this mower in action.



# Spraying

**SUMMER IS HERE**, and while for many this means days at the beach, BBQs and backyard cricket, for turf managers it brings a range of weeds and pests to contend with.

Spring has come and gone and with good rainfall in recent times many weeds and grasses have taken a liking to the favourable conditions. Keeping your turf surface as pure and clean as possible through the Summer months has many advantages. Water, nutrients and air are all available to the turf and even more so if correct cultural practices are maintained throughout Spring and Summer which Turfcare can do.

**Growth** – If growth of your turf surface is becoming a time issue for your Council or Business, Turfcare can apply growth regulator to minimise your mowing time. Applied by our custom built spray truck, chemical is active in approximately two hours and growth is slowing by days end.



**Crowsfoot** in your sports fields is not only unsightly, the problem gets worse every year. Pre and post emergent herbicides are available for this and can really make a big visual difference to your oval or field.

**Disease** – Hot and humid conditions brings on disease in turf surfaces. Cool season species can suffer under these conditions if left untreated. Cutting of turf when wet and dewy in humid conditions can see disease form and cause severe damage overnight. Turfcare has a range of fungicides for preventative and curative applications.

## Why Dethatch?

One of the first things you can do for a lawn in the Spring is thatch control. Dethatching a lawn in the Spring helps it “wake up” by removing dead material, cutting old rhizomes and stolons, which encourages new growth. Thinning the thatch layer opens up the lawn surface allowing for improved nutrient uptake and for water to penetrate the surface.

The renewed growth and warming temperatures of Spring provide the ideal setting to perform this procedure. Turf will benefit and thrive from even a light de-thatching almost every year.

Whether your lawn has a thatch problem and needs a deep de-thatching, or just a light scratching, now is the time to do it for noticeable results in the summer.



# Importance of Aerovation - The Earthquake

Compaction gradually squeezes out soil pore space and destroys the soil structure so essential for maintaining oxygen levels and moisture/nutrient availability without which plant roots cannot survive. Compaction is recognized as a major problem in sustaining top quality turf and a feature of this machine is that it will put the maximum amount of air into the ground with no surface disturbance.

Summer is a great time to aerate your sports surface in preparation for the long hot summer ahead.

Deep aeration in this period will set up a healthy rootzone also allowing moisture to penetrate down to where it should be creating a healthy environment for the likes of earth worm to assist with the plant health.

The Earthquake introduces a new style of broad acre de-compaction that virtually makes deep tine aeration and other means of turf moling and deep ripping obsolete. There is nothing that comes close, and despite its appearance the Earthquake IS NOT a slicer.

The Earthquake will decompact soils by 50% with every application, we have done penetrometer readings after jobs on all types of soils, heavy clay type soil having the best results and long lasting results. The added bonus of the earthquake is it can also act as a root pruning machine with depths up to 300mm which is ideal for golf courses or tree lined oval leaving very little disturbance and remaining in play.

It really must be seen to be believed, it will shatter the hardest ground and leave the ground immediately ready for play.

The Earthquake is ideally used when the soils are hard and dry for maximum soil shattering with the Earthquakes unique aeration blades deeply slicing while simultaneously laterally fracturing, all without damaging the turf.

One machine can do it all, from golf course fairways to racetracks, highly compacted sports grounds or intensely managed prestige arenas.



[www.turfcare.com.au](http://www.turfcare.com.au)  
E: [info@turfcare.com.au](mailto:info@turfcare.com.au)  
P: 03 5248 0000



## STAFF PROFILE - LUKE TREZISE

Luke is a Director of the Company since its beginning, coming from a Golf Course background. Luke has 24 years experience in the turf industry and has gained numerous qualifications over this time.

Luke is available to meet with clients and discuss all their turf, renovation, construction and maintenance requirements.

Interests outside work include fishing and supporting his three boys in their sporting pursuits, has seen Luke take on many roles including umpiring, coaching and medial support that goes with good parenting.

Don't hesitate to contact Luke if you have any support requirements.

**SUMMER 2012**  
**NEWSLETTER**